

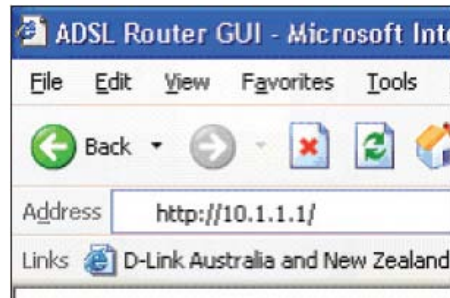


## How to Connect a Dlink 604T Modem to Saco Technology Broadband

This guide will show you how to connect your Dlink 604T Broadband modem to Saco Technology broadband.

Follow the steps below and your connection should be ready to use within ten minutes:

### Step 1



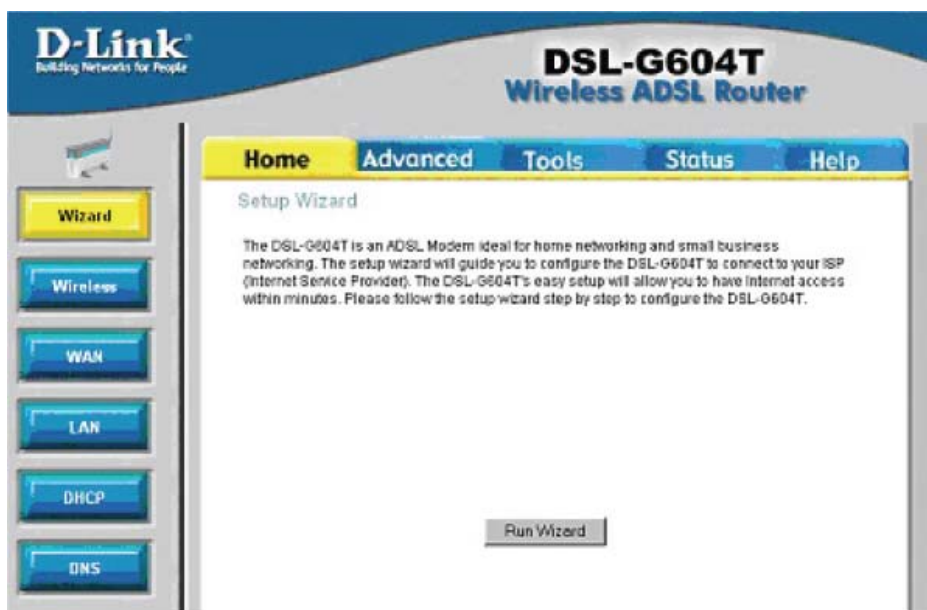
Open your Internet browser (Internet Explorer)  
In the address bar type the following  
<http://10.1.1.1> and press Enter

### Step 2



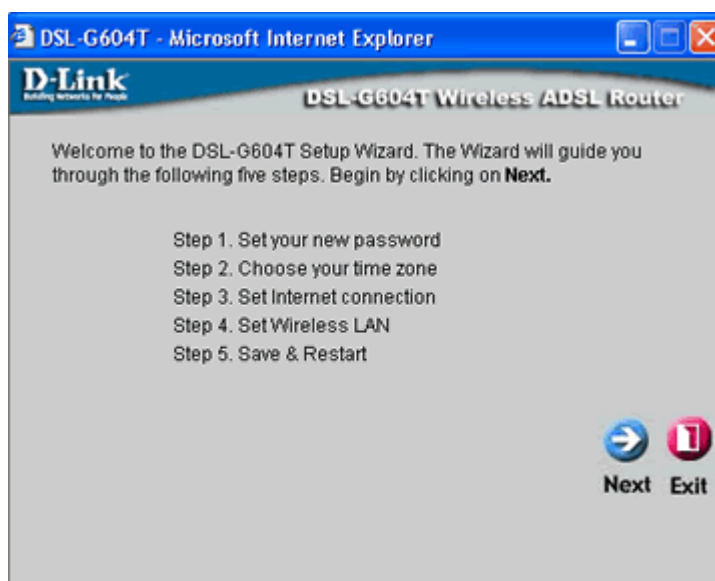
You will now receive a pop up asking for a username and password. Unless you have changed these yourself the default username will be admin and the default password will be admin as well.

Step 3



Now you need to click the Run Wizard Button

Step 4



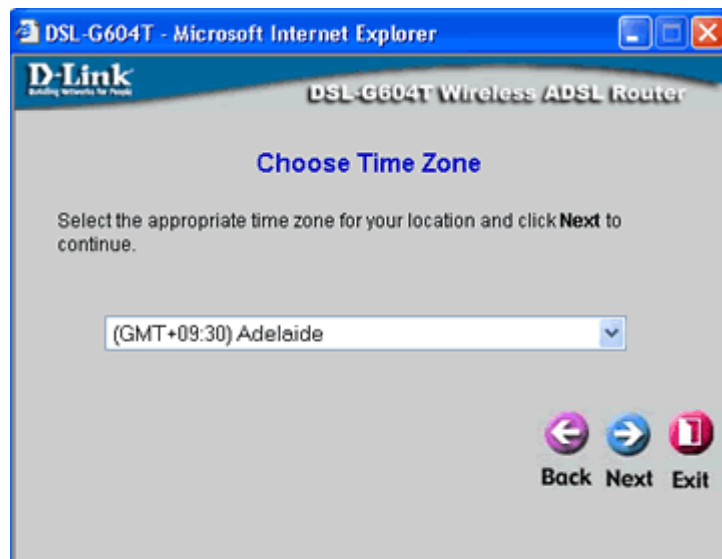
Click Next

Step 5



You will now have the opportunity to change the password which is used for the modem. We recommend just entering admin as the password. Then Click Next

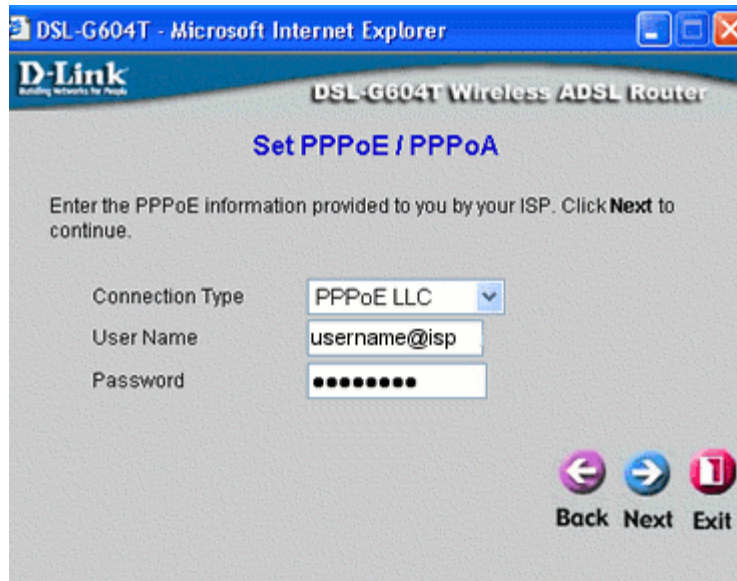
Step 6



Please select the correct time zone for your area and click next.

## Step 7

\*Please note that you may be asked to select your Internet Connection Type (WAN) before you receive the window below. Simply select the PPPoE/PPPoA option and select Next. (This is only required on the newer version of the Dlink 604T Modems)



The screenshot shows the configuration page for the D-Link DSL-G604T Wireless ADSL Router. The page title is "Set PPPoE / PPPoA". Below the title, there is a message: "Enter the PPPoE information provided to you by your ISP. Click **Next** to continue." The form contains three fields: "Connection Type" with a dropdown menu set to "PPPoE LLC", "User Name" with the text "username@isp", and "Password" with a masked field of ten dots. At the bottom right, there are three buttons: "Back" (left arrow), "Next" (right arrow), and "Exit" (stop sign).

Select the Connection Type (PPPoE LLC). Enter your Saco Username ([username@sacotech.com.au](mailto:username@sacotech.com.au)) and Password in the fields provided.

Click Next to continue.

## Step 8

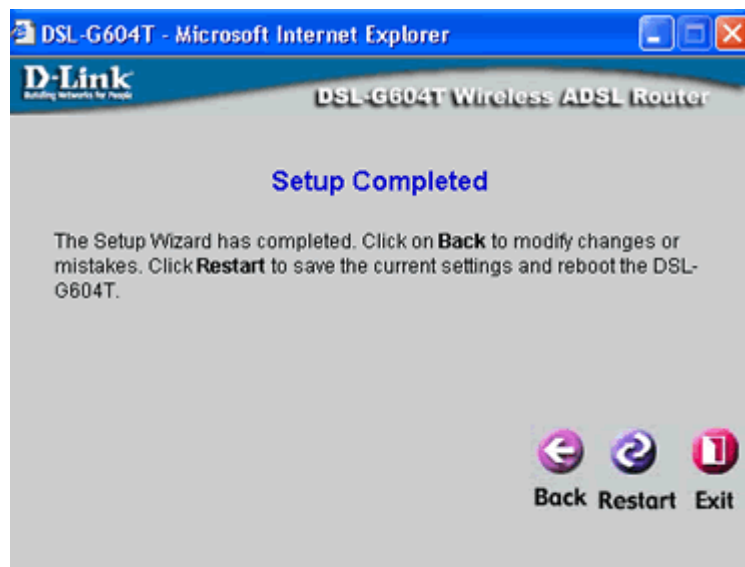


The screenshot shows the configuration page for the D-Link DSL-G604T Wireless ADSL Router. The page title is "Set Wireless LAN Connection". Below the title, there is a message: "For security reasons, the wireless portion of this device is disabled by default. To enable this and setup wireless security, please check the 'Enable Wireless LAN' checkbox below. Click **Next** to continue." The form contains one checkbox labeled "Enable Wireless LAN" which is checked. At the bottom right, there are three buttons: "Back" (left arrow), "Next" (right arrow), and "Exit" (stop sign).

You will now be given an area to configure your wireless settings. Unless you know what you are doing in this area it is advised to leave settings as they are as Saco Technology does not support the setup of wireless networks. Click Next.

If you receive another windows asking above wireless settings please select next again.

## Step 9



This is the last step. All you simply need to do is select restart and give your modem a few minutes to connect to the Saco Technology Server. Once this is done you should be able to surf the internet now connected to Saco Technology Broadband.

If you have problems running the wizard please contact Saco Technology Support.