



## Guide to installing your new USB Wireless Modem

Open the USB Wireless Modem box which is provided. You should find an Optus 3G SIM card. You need to push the SIM card out so the SIM card is just by itself.

Once that has been done you need to remove the lid from the wireless modem. You will notice on one side there is a small tab which you can slide out from the wireless modem. You now need to place the SIM card into the wireless modem.

The next step is to insert the USB wireless modem into the USB port of your computer.

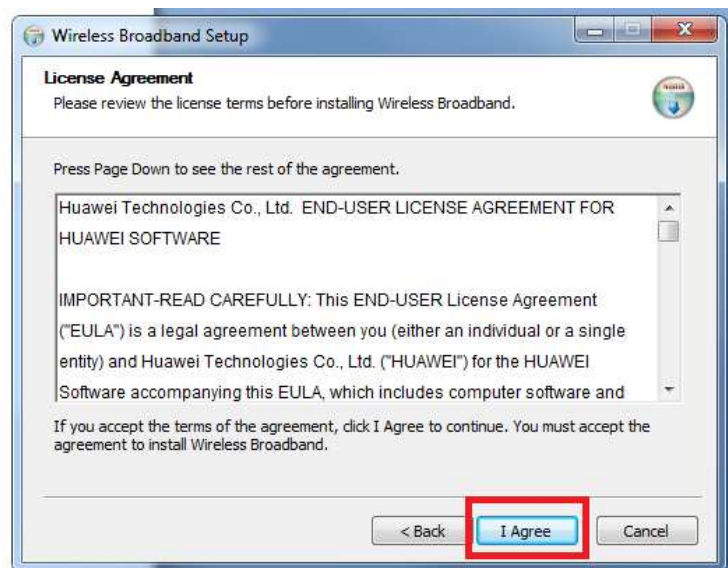
After a short while a box like the one below will appear. Simply click on the Run AutoRun.exe option to start the installation of the wireless modem. Please note on some computers you may receive a pop up asking you to select allow or yes. Simply select this as it is just double checking with you that you want to run the installation program.



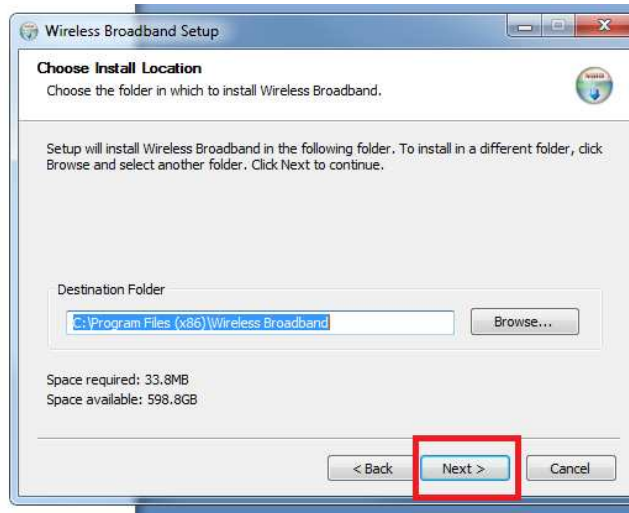
You will now receive the following screen. Simply select next down the bottom:



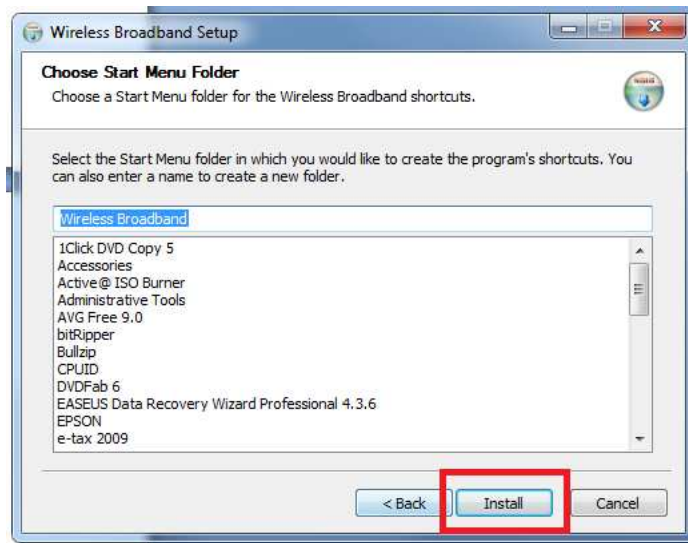
Then select I agree



Select Next again



Then hit the install button. Once you press this it will install the software which the wireless modem needs to run.



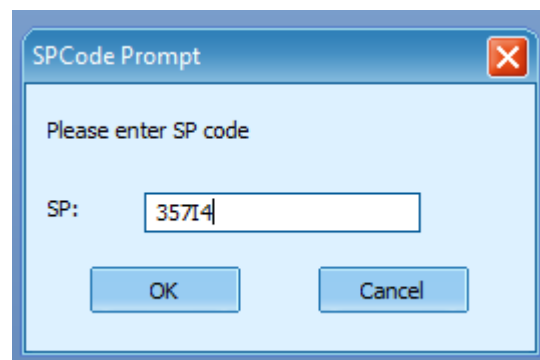
Once this has been done you will see a window like below



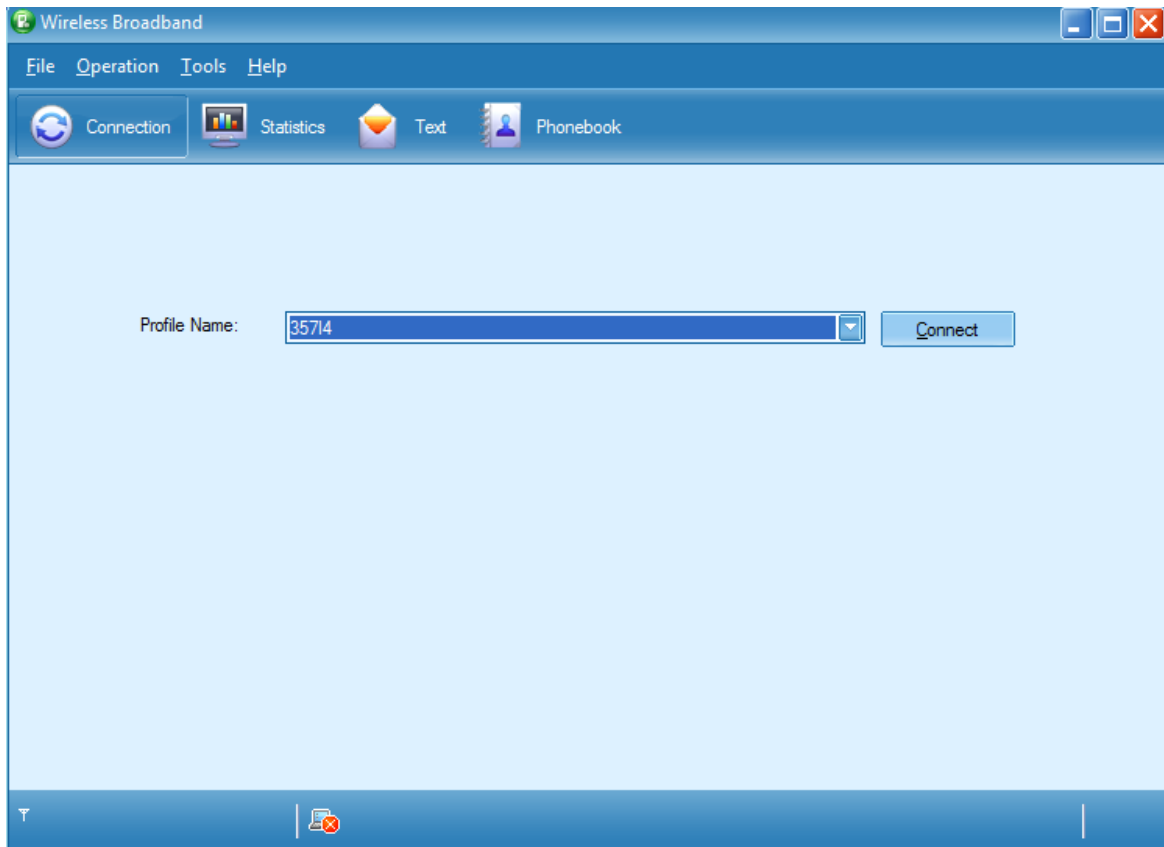
A new icon like below will appear on the desktop of your computer. You can now simply use this icon to connect to the internet.



Before you can connect for the first time you will see the following window. It will ask you to enter a SP code. This is so someone can't simply install the USB wireless stick on another computer. The SP code is 35714 (number 3, number 5, number 7, capital "i", number 4)



To connect all you need to do is simply hit the Connect button. Once you have connected it will change to say Disconnect. Please note that once you hit the connect button and start surfing the internet do not close the program as it will disconnect you from the internet. Instead simply minimise the program and it will display but still stay connected for you.



If you find after using it for some time that the speed of the internet is slow it could be please you have a very low signal. The cable provided with your USB wireless modem allows you to reposition the modem a little higher to give you better coverage. Also at an additional cost an external areal can be provided to help boost your signal.